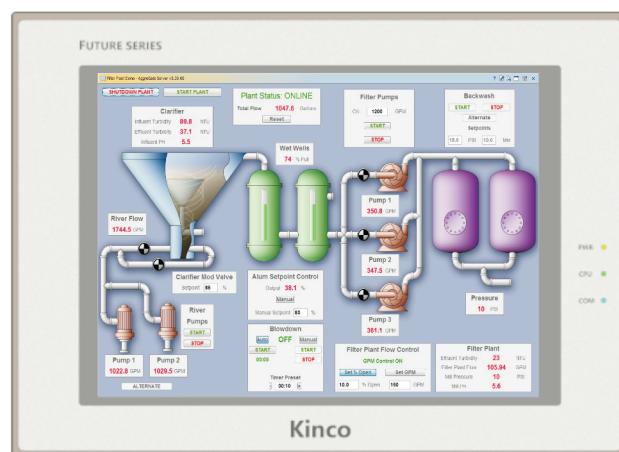


F104E/F104E-CAN

FUTURE series HMI

- ◆ Cortex-A9 industrial CPU , main frequency 1GHz, memory up to 512M ;
- ◆ 10.4" , High brightness and high resolution display , 4: 3 industrial dimensions;
- ◆ Built in ferroelectric memory supports unlimited erasure of recipe data ;
- ◆ Three proofing spray + isolated power supply to enhance reliability;
- ◆ SD card extended storage space;
- ◆ Support webcam access, real-time dynamic control;
- ◆ The new generation of Kinco dtools configuration software is powerful and easy to use.



Future series with new generation of free software:

Kinco Dtools configuration software. It supports simplified Chinese, complex Chinese, English and Korean versions. The configuration design content supports all installed fonts in the computer system. Support remote cloud monitoring, VNC screen and screen, screen and computer, mobile phone and other terminal interoperability support installment, PDF browsing, operation log record and other convenient control design guide interface, user-friendly



Future Series HMI by Kinco marks our future

FUTURE series HMI F104E/F104E-CAN

| Model | F104E | F104E-CAN |
|----------------------------------|---|-----------|
| Performance specification | | |
| Display size | 10.4" TFT | |
| Resolving power | 1024*768 pixel | |
| Display color | 16.77M | |
| backlight type | LED | |
| brightness | 450cd/m ² | |
| Backlight life | Over 50000 hours | |
| Touch panel | 4-wire precision resistance network (surface hardness 4h) | |
| CPU | 32bit RISC Cortex-A9 1GHz | |
| storage | 512MB DDR3+4GB eMMC | |
| RTC&Recipe memory | Built in real time clock+32KB | |
| Expandable memory | 2 USB Host+1 SD Card | |
| Print port | USB Host/Serial port | |
| Ethernet | 1*10/100MHz self-adaption | |
| Program download | USB drive/Ethernet | |
| Communication port | COM0:RS232/RS485/RS422; COM1:RS232/RS485/RS422; COM2:RS232 | |
| Audio output | 1*Audio output | |
| extension interface | Not Supported | 1*CANopen |

Electrical specification

| | |
|------------------------|---|
| Input power supply | DC12V~DC28V, Built in isolated power supply |
| Power waste | 12W |
| Allowed power loss | <3ms |
| insulation resistance | Over 50MΩ@500V DC |
| Withstand voltage test | 500 VAC 1Minute |

Structural specification

| | |
|---------------------------|----------------------|
| Shellcolor | Light grey |
| Shell material | Engineering plastic |
| Outline size | 310mm*230.6mm*55.7mm |
| Installation opening size | 299mm*219mm |
| Weight | 1.7Kg |

Environmental specifications

| | |
|---------------------------------|---|
| Working environment temperature | -10~55℃ |
| Working environment humidity | 10~90% RH (No condensation) |
| Storage ambient temperature | -20~60℃ |
| Storage environment humidity | 10~90% RH (No condensation) |
| Sinusoidal vibration test | 10~500Hz ,30m/s ² ,Three axis / 1 hour |
| Cooling mode | Natural air cooling |

Product certification

| | |
|------------------------|----------------|
| Panel protection class | Ip65 compliant |
| Ce authentication | CE compliant |

Software

| | |
|------------------------|------------------------------------|
| Configuration software | Kinco DTools V3.4and above version |
|------------------------|------------------------------------|



Dimension drawing (Setting: mm)

